

A. Safety Guide

Thank you for purchasing this products.



WARNING • Before using, read these user's manuals of this product to ensure correct usage through understanding. After reading, store them in a safe place for future reference. Incorrect handling of this product could possibly result in personal injury or physical damage. The manufacturer assumes no responsibility for any damage caused by mishandling that is beyond normal usage defined in these manuals of this product.

Make sure there is adequate lighting when doing the assembly. When assembling keep it away from children and pets.

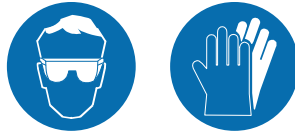
- You will be using sharp tools. Always use personal protective equipment such as gloves and safety glasses to avoid the risk of injury.
- Make sure you step on the dry ground, free from any liquids such as oil and water when assembling this product. Use anti-slip shoes to avoid falling due to slips.
- Keep this product out of reach of electric current, as this product is made of metal that conducts electricity. Make sure there is adequate lighting when doing the assembly. When assembling keep it away from children and pets.

B. Equipment needed to assemble.

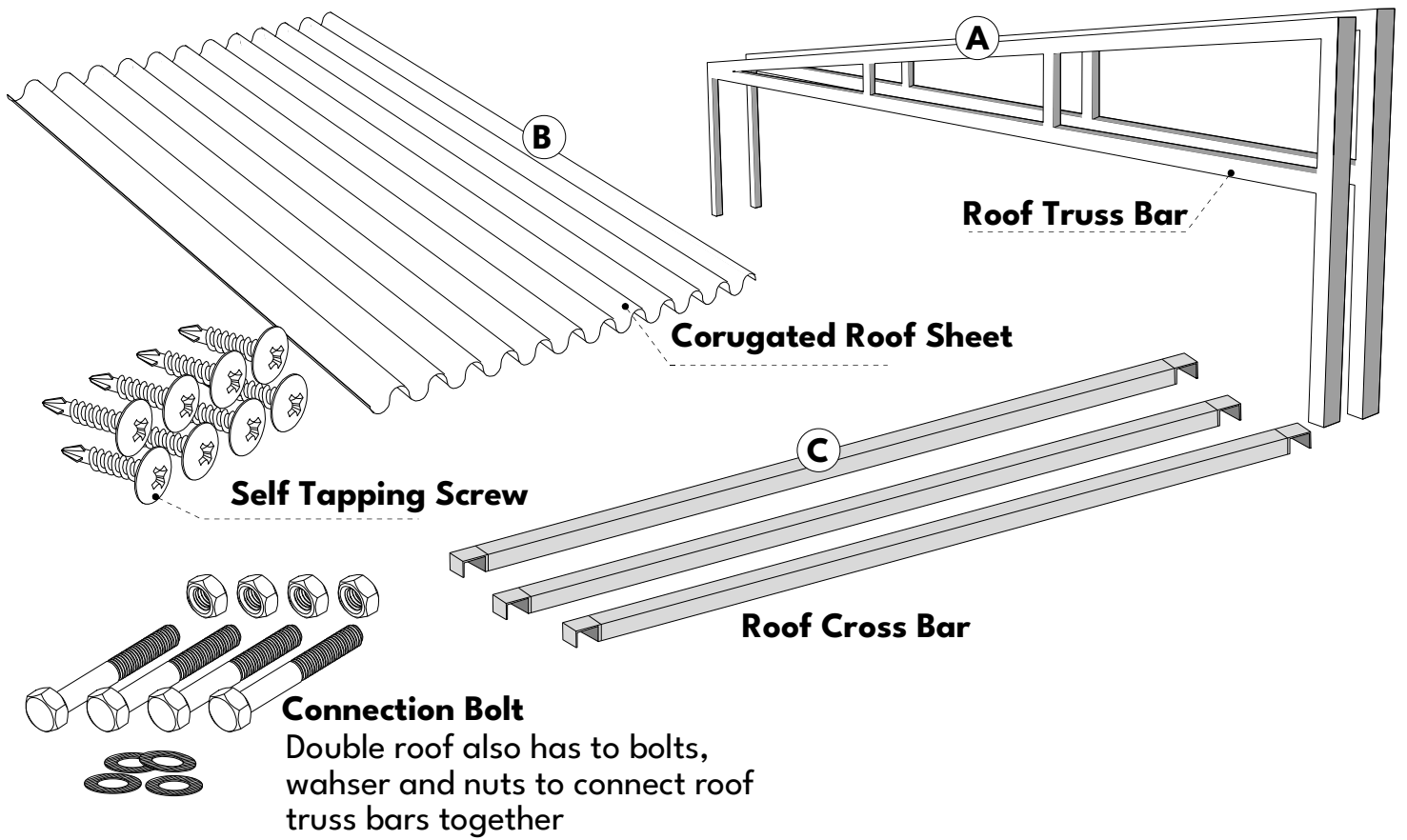
Not included in the item package.

- Electrical Hand Drill
- Safety transparent glass (optional)
- Safety Gloves and Safety Shoes
- Metal Scissors for Cutting Metal Plate Sheet

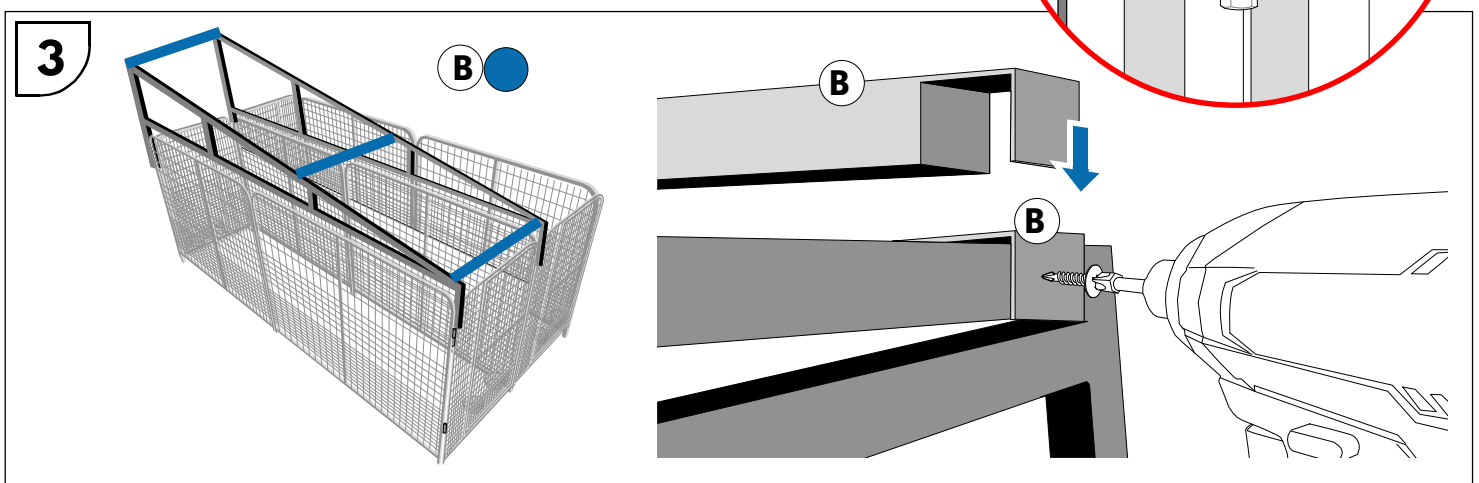
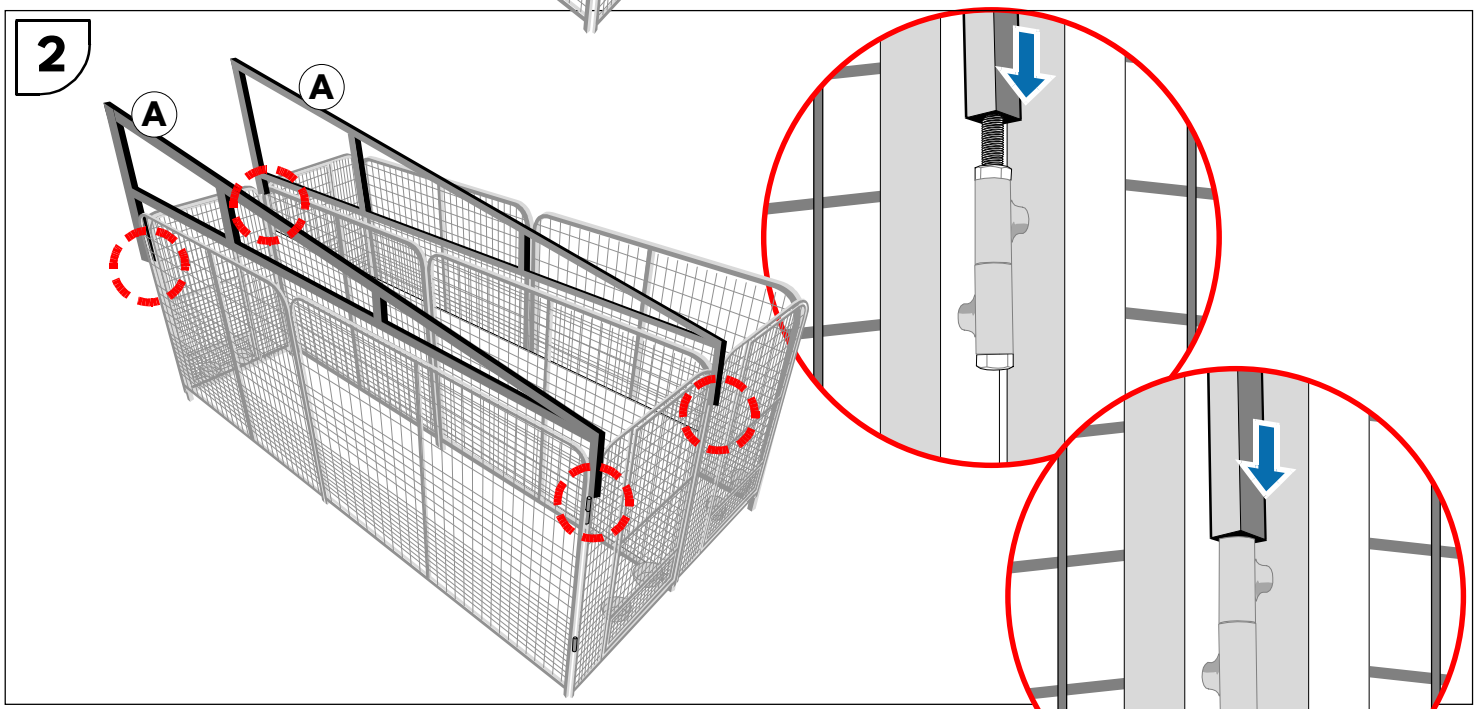
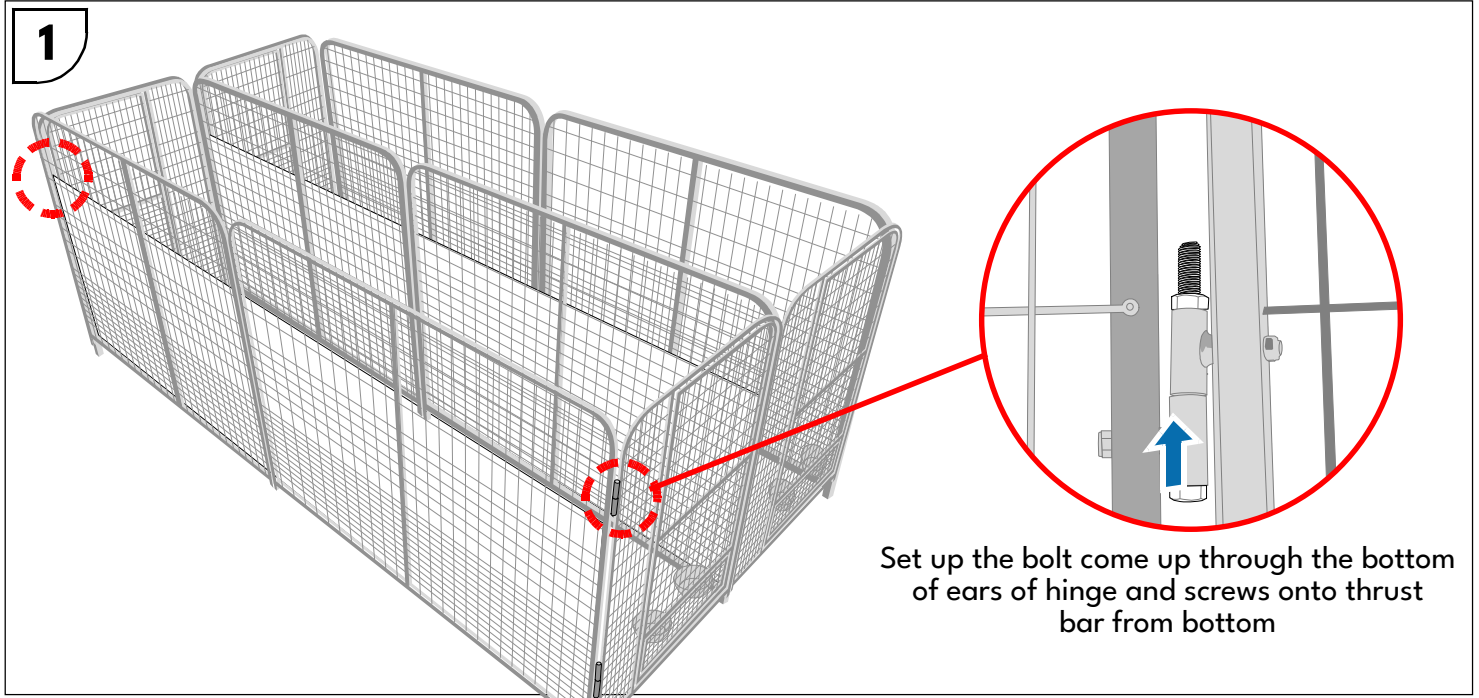
SAFETY PRECAUTION

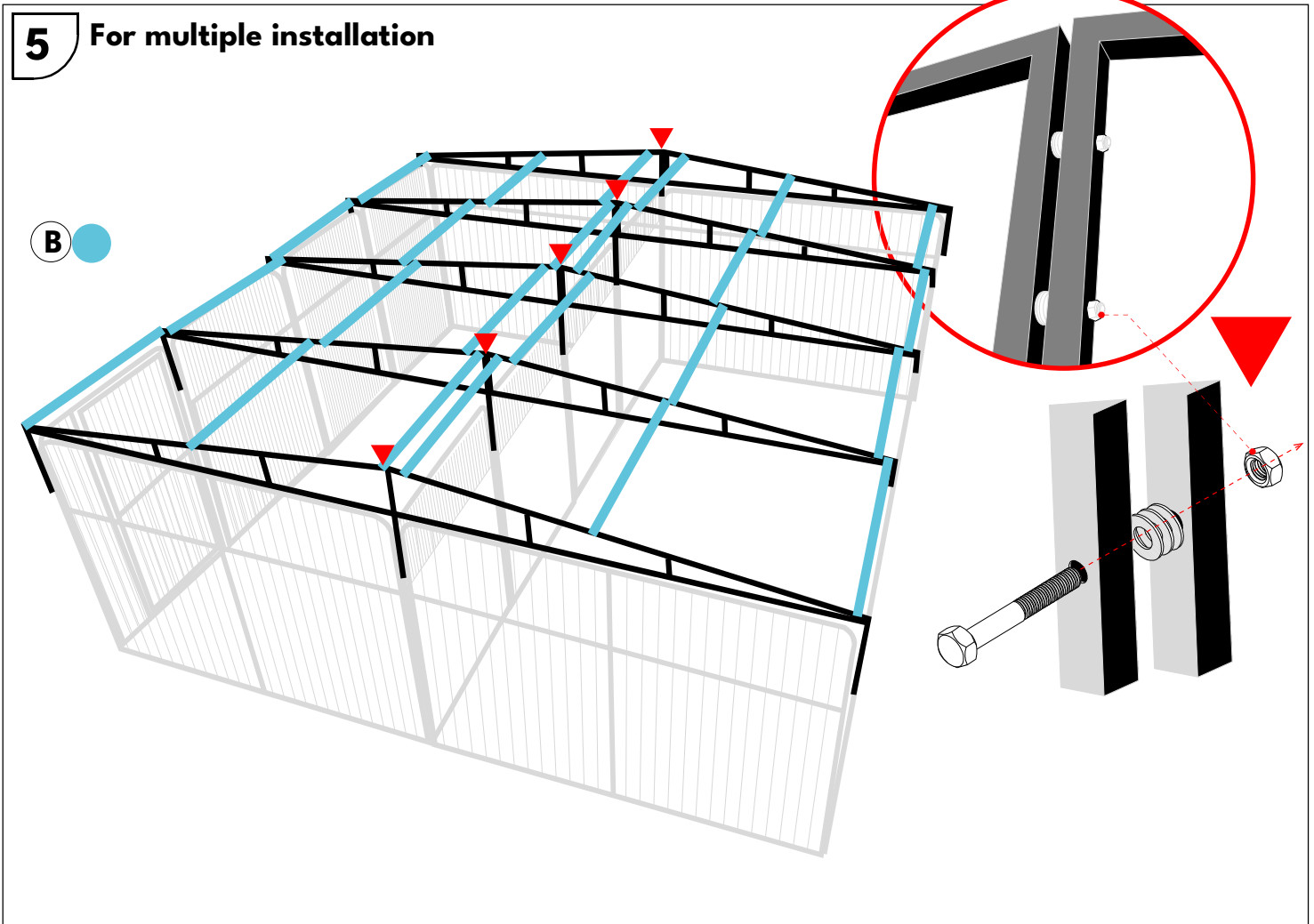
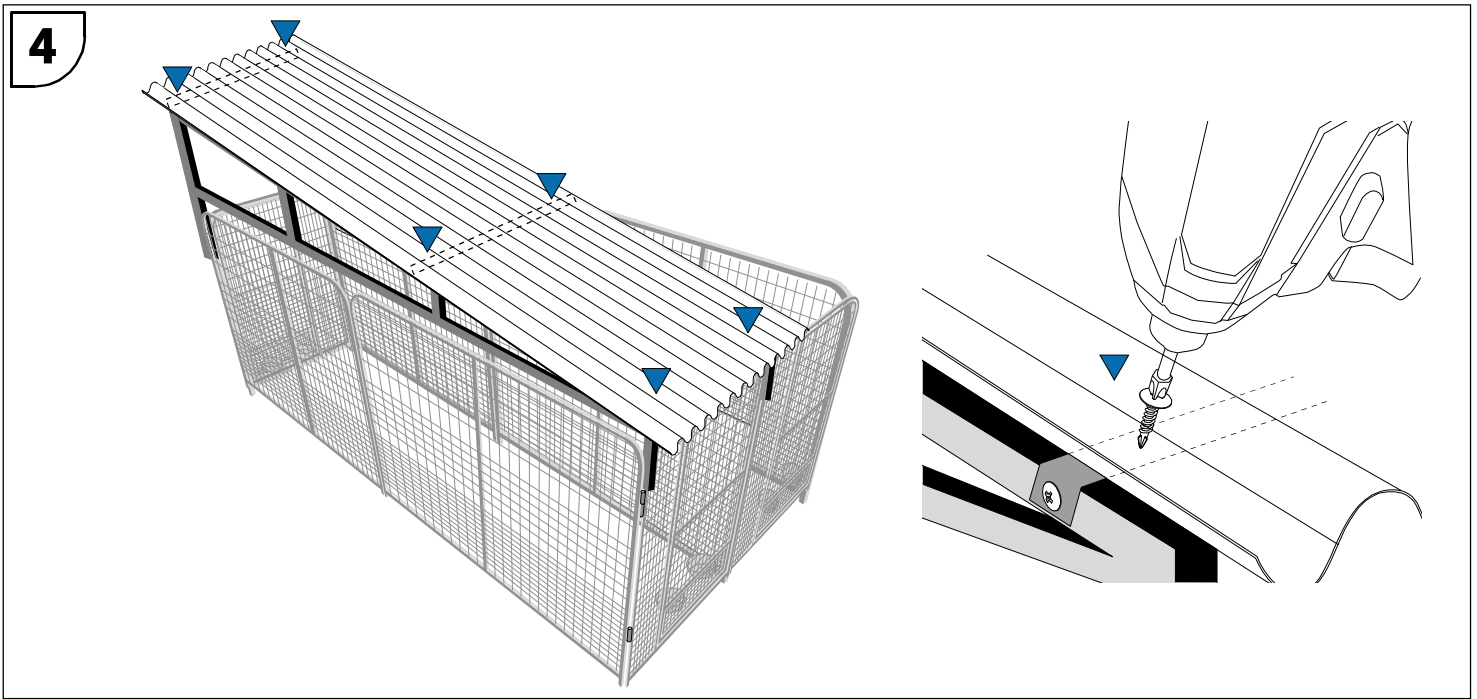


B. Inside the package



C. How to Assembly





THANK YOU!